



A close-up photograph showing a person's hands, with dark red nail polish, locking a dark wood-grain laminate floor plank. The hands are positioned on either side of the plank's edge, where a locking mechanism is visible. The background is a blurred view of the same floor planks.

FLOOR LOCKING TECHNOLOGY

to last a lifetime



Välinge

Searching for the perfect fit? – The right locking system is the answer

We believe that floor installations should be a fast and simple process with perfect results every time - no gaps between the boards, and no unevenness or squeaking. The floor should also stay that way, year after year, for its lifetime. We are sure you agree with us!

We are globally recognized for our innovative floor technologies, and we are especially well-known for having the easiest, fastest and most reliable installation systems on the market. As inventors of the first ever mechanical floor locking system and with close to 30 years in the business, we dare to say that we know floors and more specific – floor locking systems.

Innovation is at the core of everything we do, and we are constantly challenging traditional ways of thinking – all to meet market demand with smart, creative and efficient solutions. Our revolutionary locking systems brings advantages like waterproof seams, reliable installation of flooring in straight sets and the possibility to creatively make the floor climb up the walls. All while being a breeze to install!



EASY PANEL REMOVAL

Now it's also possible to easily remove individual panels without removing an entire row. The new 5G™ profile and the specifically designed dismantling pin make it possible to push the 5G insert back into the groove and unlock the panels.



Sustainability is a major driving factor behind our ethics as a company. The future of the flooring industry is reliant on innovation, and we strive to continuously stay at the forefront to meet market demand of smarter and more sustainable solutions.

Laetitia Kimblad, Director Floor Locking at Välinge Innovation

Sustainability isn't a competitive advantage or a niche – it's a business standard and it's becoming more and more crucial for customers when they are investing in new flooring. Our technologies are contributing to floating floors with strong and reliable locking and the possibility to make the joints waterproof – simply put, they are made to last a lifetime.

A great locking system makes it easy to dismantle the floor without damages. This allows you to reuse the panels elsewhere – either as flooring, wall panels or something completely else.

With innovative and long-term solutions, we create less strain on the planet's resources and make better conditions for future generations.





Choose the right locking system – **improve customer experience**

Choosing the right floor locking system makes all the difference for the end-consumer experience. Most negative reviews and feedback from dissatisfied customers are based on the installation experience and not the product itself. This makes it truly important to offer high-quality products with fast and smooth installation.

There is no one-size-fits-all solution and variables such as material, design, format and thickness of the panels impact the installation process. Our different solutions are optimized for all kinds of flooring products. To make sure you get the perfect fit for your product – we offer expertise and guidance all the way.

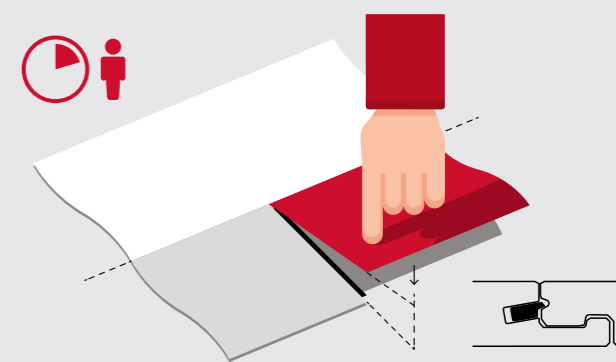
Not sure what to choose? **Let us help you!**

Locking systems **to last a lifetime**

Best installation system



Fold down
3x Faster installation
Easiest click system
50% stronger locking
Large tolerance window



5G – profile example

Upgrade with exclusive features



5G^W
Waterproof & Worry-free



5G^W
Floor & wall compatible

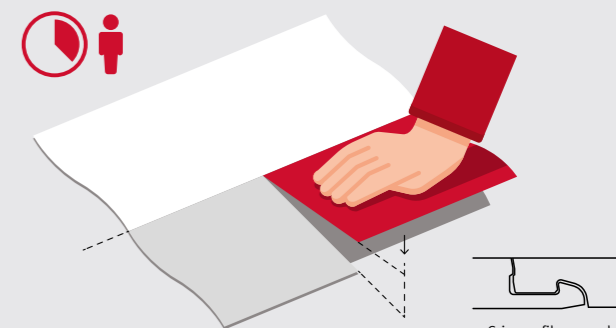


5G^W
Perfectly aligned

Better installation system



Push down
2x Faster Installation
Easy click system
30% stronger locking

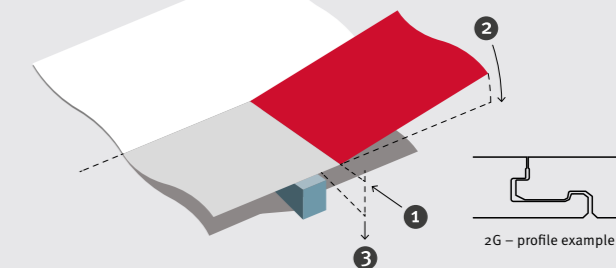


5Gi – profile example

Good installation system



Angling
Works for all material
For long and short side



2G – profile example



Scan the QR-code to learn more

Up for the challenge

When subject to high vertical load, poorly designed locking systems might result in height differences, gap openings or they might even break. We put our locking systems through comprehensive testing to ensure that our licensees' products are sure to last even under the toughest conditions. We have one of the flooring world's most advanced and well-known innovation hubs. This is home to state-of-the-art testing equipment and everything from new inventions to product enhancements undergo substantial assessments before released to the market – all to meet our premium product standards.

DID YOU KNOW THAT?

Our patent portfolio is one of the most comprehensive in the flooring industry. It comprises more than 3,500 granted patents and a global license base of over 320 licensees.





It's never been easier – or faster

5G™ is the Välinge brand for the globally recognized fold down installation system used by more than 100 floor producers around the world. It provides the most effortless installation on the market without the need of glue, nails or any other time-consuming maneuvers. 5G is based on a single action installation method suitable for all types and widths of floor products. It's fair to say that this really is the first locking system that truly makes floor installations fast, easy and enjoyable for everyone – professional or DIY.

When launched, 5G was an instant success and to meet market demand, we have evolved the solution even further – without losing any of the sought-after advantages. This has led to outstanding innovations within our 5G portfolio and it's now possible to get everything from waterproof seams and reliable pattern installation, to flooring that creatively climb up the walls. All with the same installation-friendly system.



5G Fold Down installation



Angling installation



Snap installation



You simply slide the plank in and drop it into place. It saves several hours off the installation, which is a great appeal for the installer.

Steve Curry, Sales Director at Designflooring





Bring 5G to your floor

We are proud to share all the outstanding features that our 5G™ Fold Down portfolio can bring to your floor. It's the most versatile, reliable and installation-friendly floor locking system there is. It's fair to say that this really is the first locking system that truly makes floor installations fast, easy and enjoyable for everyone – professional or DIY. All you need to install the floor is one person, one pair of hands and a single movement. It's as easy as that!

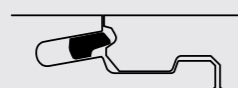
HOW IT WORKS

When a panel is folded down, a flexible 5G insert is pushed into an insert groove. As the panel reaches its final position, the 5G insert snaps out into a wedge groove, emits a “click-sound” and perfectly locks the product, both vertically and horizontally.

5G INSERT EXAMPLE



PROFILE EXAMPLES



Laminate



LVT/SPC & WPC



Scan the QR-code to learn more



Enhanced water resistance

100%
Secured result

Our solution passed the NALFA 48 hours test with great results and significantly lower edge swelling.

3x
Faster installation

With 5G™ Dry™ you get the fastest and easiest fold down installation on the market – with reliable result every time.

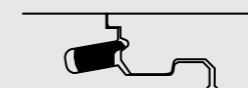
0%
Leak through

The locking system stops water from leaking through the joints and eliminates the risk of water reaching the subfloor.

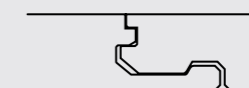
HOW IT WORKS

Our leak-proof 5G Dry has the same fast, easy, and durable installation as the popular 5G Fold Down but with a watertight joint. It pairs perfectly with wood-based floors, such as hardened wood and engineered wood, and with both laminate and resilient flooring. The secret is the watertight joint preventing liquids from seeping through the seams and damaging the sub-floor. The result is zero-leakage and no need to worry!

PROFILE EXAMPLES



Short side



Long side



Scan the QR-code to learn more



Do you know how often floors actually leak water to the subfloor?

25% of laminate floor

48% of engineered floor

72% of resilient flooring with standing water and detergent



Innovation – engrained in everything we do

Innovation has been the heart and soul of our business since the company was founded in 1993. Our progress is built on constantly challenging today's technological solutions with new ways of thinking. This is what led us to revolutionize the way people install and use floors and create a groundbreaking method to assemble furniture without any tools or fittings.

Our world-renowned R&D Center at our headquarters in Viken, Sweden is the high-tech hub for developing new concepts and technologies. Here, and at our Kunshan support center in China we also provide world-class support with everything from pilot manufacturing to testing and technical support. Our licensees are found all over the globe and each day, we make sure they get access to the latest flooring, furniture, and surface technologies used in people's everyday lives.



All trademarks referenced herein are either trademarks or registered trademarks invented, registered, and owned by Välinge Innovation AB. Use of such mark or technology is under licence.

www.5gfolddown.com



Välinge Innovation AB
Prästavägen 513, 263 65 Viken, Sweden
Phone: +46 (0)42 23 78 15
Email: flooring@valinge.se